

Thank you for purchasing our product.

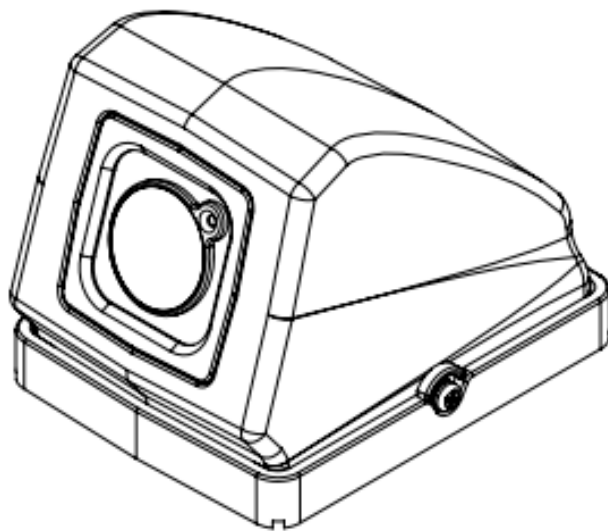
Please read this User's Manual before using the product.

Change without Notice.



**BRD EYE<sup>®</sup>**

## **CAR REAR VISION COLOR CAMERA INSTRUCTION MANUAL**



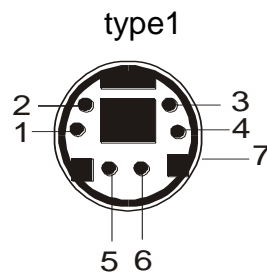
## **Specification**

<b>Model</b>	<b>C00651</b> <b>Analog-out</b>
Signal System	NTSC
Pick up device	1/3.2" Image Sensor
Effective Pixels	1297(H) x 977(V)
Resolution	700 TV lines
Synchronization	Internal Sync.
Scanning System	2:1 interlace
S/N Ratio	More than 50 dB (AGC OFF)
Electronic Shutter	Auto 1/60 (1/50) ~1/100,000 sec
Gamma Correct	0.45 / 1
Min. Illumination	1.5 lux(50IRE)
Aperture Correction	NA
Microphone	Supported
Lens Type	Board lens :3.6mm 75(H)-56.2(V)-93.7(D)
Power Source	DC12V / 130mA
IR Distance	5M
Operating Temperature	-20°C ~ 70°C
Stock Temperature / Humidity	-40 to 85°C
Weatherproof	IP68
Dimension	68.1(W) x 69.5(H) x 87.4(D)mm

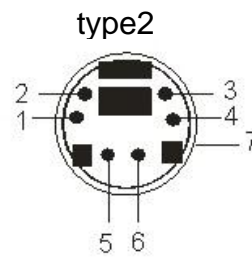


Please use suitable adapter DC12V  $\pm$  10 %  $\geq$  1A. Otherwise, this product will be damaged.

## CABLE PIN FUNCITON



1	Audio
2	Power
3	Video
4	GND
5	N/A
6	N/A
7	N/A



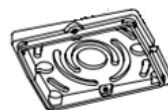
1	Video
2	N/A
3	Audio
4	Power
5	GND
6	N/A
7	N/A

The situation of blue wire :

Item	Maintain blue wire	Cut off blue wire
Figure		
Description	Normal	Mirror

## Installation instruction

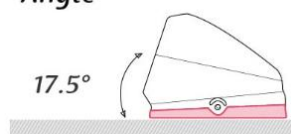
The camera installation is divided into two customizable parts: the bottom plate and the body camera



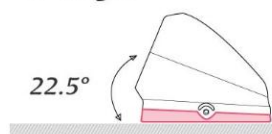
## Bottom plate installation

Our bottom plate design also enable user to adjust the viewing angle, when you screw it to the surface, please refer to below drawing

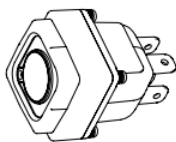
*Standard Angle*



*Additional 5° Angle*

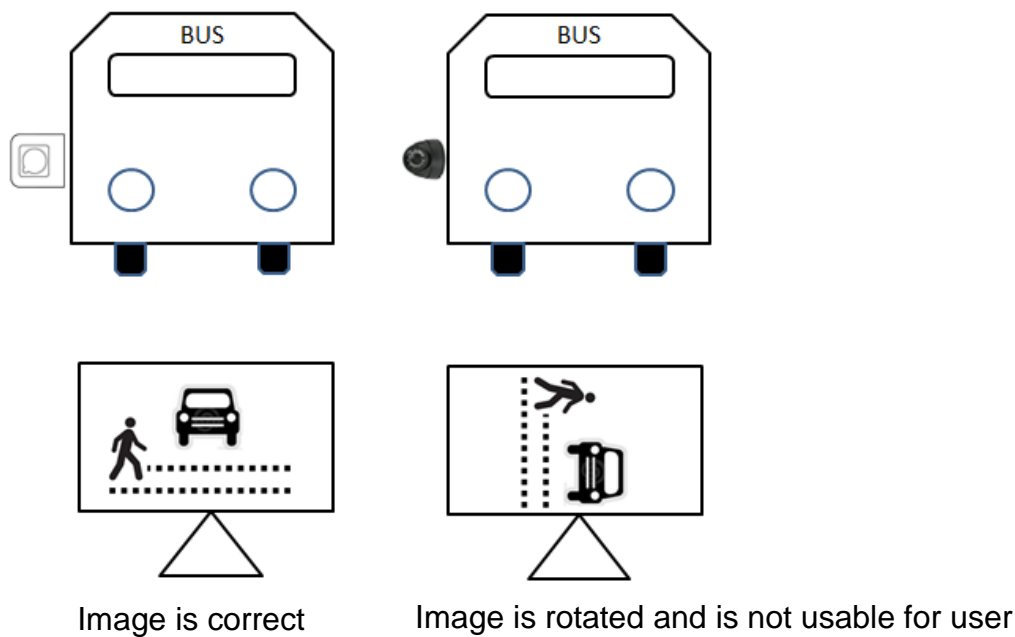


**Body camera installation**



This camera can be installed on any side of the vehicle such as ceiling, side or bottom

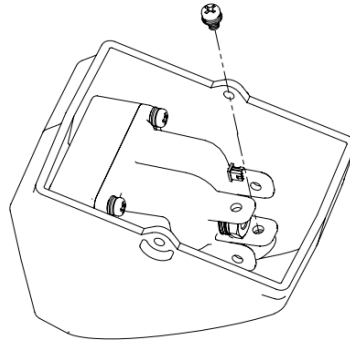
Below is an example of comparison with traditional camera



According to your installation environment please refer below position

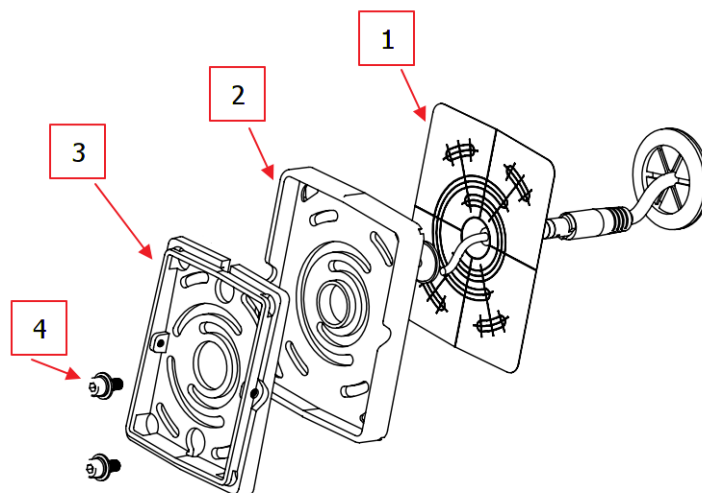
Ceiling	Platform	Vehicle Right side	Vehicle left side

Once you have chosen the position of the body camera, use the screw to lock to the housing please refer to below drawing



Fix the bottom paper with hole in a proper position on the surface of car body

- 1) Fix the plastic bottom
- 2) Fix the steel bottom
- 3) Use the two screws to attach the whole bottom side



Then screw the housing + body camera to the bottom side



## Dimension

