

# 3rd Eye MobileVision

PRODUCT CATALOG



# Surround Your Fleet With Vision

## 3rd Eye MobileVision

[www.AWTI.net](http://www.AWTI.net)



## Company Profile

3rd Eye MobileVision™ founded in 2000 with a vision to manufacture the most advanced and reliable safety technology equipment for our valued customers. We have earned our outstanding reputation by focusing on our customers' needs and exceeding their expectations. We accomplish this through the relentless pursuit of manufacturing the highest quality "Severe Duty" products in the marketplace. Our focus on performance, reliability and customer service ensures dependable performance day in and day out. We commit every day to driving down costs and passing these savings on to our customers by constantly staying on the cutting edge of new technologies. When partnered with our unique business culture of listening to our customers, 3rd Eye MobileVision™ is without question the industry leader for mobile video systems, vehicle recording, fleet tracking, backing radar alarms, tire pressure monitoring and driver behavior event monitoring. Our mission is to continue to provide and constantly improve our safety technologies to ensure our customers and the community return home safely to their loved ones.

## UPGRADE WITH EASE . . .

*ADAPTER ACCESSORIES FOR EVERY BRAND*



Event Recording  
Vision Integrated Radar  
Dual Mode Smart Monitors  
Tire Pressure Monitoring  
Heavy Duty Camera Systems



YOUR PARTNER IN SAFETY

**Toll Free: (866) 804-2984**

9940 W Sam Houston Pkwy | Suite 330 | Houston, TX 77099

## WHAT IS DRIVESAFE?

### DriveSafe: Most Advanced Vehicle Activity Information System

DriveSafe is the tool you need to modify your drivers' behavior, reduce your accident costs, and generate more revenue from your vehicles. It gives you unmatched awareness of what's happening with your vehicles and drivers at all times.

DriveSafe highlights the risky behaviors that can lead to accidents, personal injury, and property damage—and endanger a driver's professional livelihood. By showing a driver's unsafe actions, you can coach them to drive safer.

Increase revenue and customer satisfaction with DriveSafe as well. Your drivers capture new sales opportunities and service issues through DriveSafe, so you drive top-line growth while improving operational efficiency.



## DRIVESAFE BENEFITS

### Collision Prevention

Train your drivers to reduce their risky behaviors  
 Lower your risk costs – to the bottom line

### Driver Protection

Exonerate Drivers when they are not at fault  
 Show Drivers the results of risky behavior

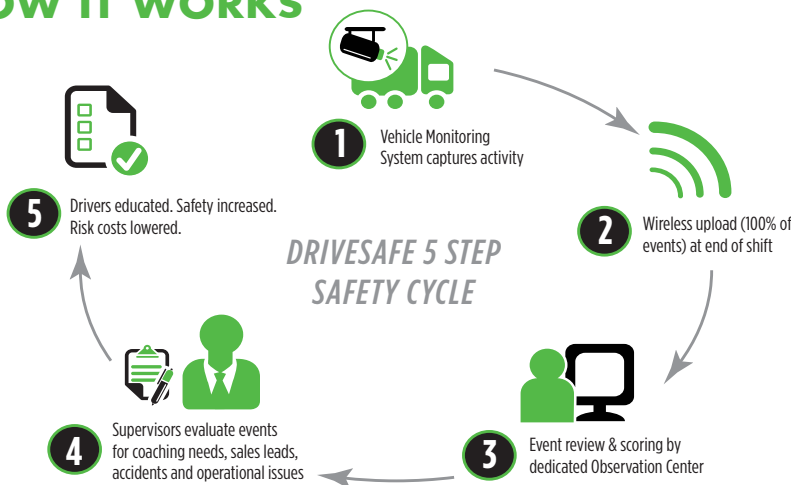
### Capture Operational Issues

Use vehicle imaging to feed new customer leads to sales teams  
 Minimize customer complaints – capture blocked access, damaged containers and more

### Detailed Reporting

See your entire operation at a glance: track trends, show accident hot spots,  
 Easily identify the riskiest driver behaviors, vehicles, and routes  
 Ensure your supervisors are reviewing events and coaching drivers

## HOW IT WORKS



# HEAVY DUTY MONITORS - CLASS 7 - 8 Trucks (Recommended)

## AWT07MLED



### Heavy Duty 7" - 4 Port Monitor

Screen Size: 7" Display with LED Panel Technology  
Video Inputs: 5 Cameras (4 CCD, 1 AV)  
Shock Resistance:  $\geq 10G$ , Die Cast Aluminum Housing  
Dimensions: 192 (W) • 140.5 (H) • 51.8 (D) mm  
Quad, Tri or Split Screen Viewing with Custom Triggers



## AWT07M2LED



### Heavy Duty 7" - 2 Port Monitor

Screen Size: 7" Display with LED Panel Technology  
Video Inputs: 2 Cameras (2 CCD)  
Shock Resistance:  $\geq 10G$ , Die Cast Aluminum Housing  
Dimensions: 192 (W) • 140.5 (H) • 51.8 (D) mm  
Single Screen Viewing, Built in Switch Box & Custom Triggers



## AWT84MSD



### Heavy Duty 8.4" SD DVR Monitor

8.4" Display with Touch Screen and LED Panel Technology  
Video Inputs: 6 Cameras (5 CCD, 1 AV) and VGA In  
Shock Resistance:  $\geq 10G$ , Die Cast Aluminum Housing  
Built in DVR / SD Card Slot (Accepts up to 32GB)  
Quad, Tri or Split Screen Viewing with Custom Triggers



## AWT07MLESD



### Heavy Duty 7" SD DVR Monitor

Screen Size: 7" Display with LED Panel Technology  
Video Inputs: 6 Cameras (5 CCD, 1 AV)  
Shock Resistance:  $\geq 10G$ , Die Cast Aluminum Housing  
Built in DVR / SD Card Slot (Accepts up to 32GB)  
Quad, Tri or Split Screen Viewing with Custom Triggers



# SLIM LINE MONITORS - CLASS 1-6 Trucks (Recommended)

## AWTSL503M



### 5" Slim Line Monitor

Screen Size: 5" Display with LED Panel Technology  
Video Inputs: 3 Cameras (3 CCD)  
Shock Resistance:  $\geq 10G$ , Die Cast Aluminum  
Dimensions: 152 (W) • 106 (H) • 28.5 (D) mm  
Single Screen Viewing w / Custom Triggers



## AWTSL43M



### 4.3" Mirror Monitor

Screen Size: 4.3" Display with Auto Dim  
Video Inputs: 2 Cameras (2 CCD)  
Shock Resistance:  $\geq 5G$   
Direct Replacement of OEM Rearview Mirror  
Single Screen Viewing w / Custom Triggers



## AWTSL714MQ



### 7" Slim Line Monitor

Screen Size: 7" Display with LED Panel Technology  
Video Inputs: 4 Cameras (4 CCD)  
Shock Resistance:  $\geq 7G$ , Up to 10G w/Hardware  
Dimensions: 181 (W) • 122 (H) • 24 (D) mm  
Quad, Tri or Split Screen w / Custom Triggers



# HEAVY DUTY CAMERAS - CLASS 7 - 8 Trucks (Recommended)

## AWT1020T / AWT1020W



### Heavy Duty Universal Color Camera

1/3" Sony Super HAD Color CCD  
Lens Angle: (AWT1020T - 150°) (AWT1020W - 170°)  
Shock Resistance:  $\geq$  10G, Die Cast Aluminum Housing  
Waterproof IP68 Rating, Infrared LED for Night Viewing  
Designed to MILSPEC Standards

## AWT150C / AWT150CS



### Universal Mount Camera / Shutter

1/3" Sony Super HAD Color CCD  
Waterproof IP68 Rating, Infrared LED for Night Viewing  
Shock Resistance:  $\geq$  10G, Die Cast Aluminum Housing  
Internal Heater, Designed to MILSPEC Standards  
Shutter Camera Available \* Ask for Details

## AWTCC758



### Compact Universal Color Camera

1/4" Sony Super HAD Color CCD  
Waterproof IP68 Rating  
Shock Resistance:  $\geq$  10G, Die Cast Aluminum Housing  
Designed to MILSPEC Standards  
Ultra Compact Design for Flexible Mounting

## AWT1020SC

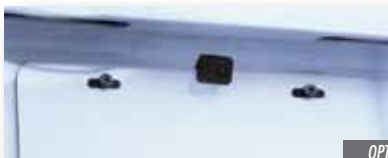


### Adjustable Side Mount Color Camera

1/4" Sony Super HAD Side Color CCD  
Waterproof IP68 Rating, Infrared LED for Night Viewing  
Shock Resistance:  $\geq$  10G, Die Cast Aluminum Housing  
Flexible Camera to Accommodate all Angles  
Designed to MILSPEC Standards

# SLIM LINE CAMERAS - CLASS 1-6 Trucks (Recommended)

## AWTSL10C



Mounts Behind Or



### Adjustable License Plate Cam

Image Type: 1/3 Color Camera, Lens: 170°  
Resolution: NTSC 628 (H) • 512 (V)  
Shock Resistance:  $\geq$  5G, IP67  
Universal License Plate Mounting  
Dimensions: 22 (H) • 22 (W) • 33 (D) mm

## AWTSL822C



OEM FIT

### Transit Camera: License Plate

Image Type: 1/3 Color Camera, Lens: 170°  
Resolution: NTSC 510 (H) • 492 (V)  
Shock Resistance:  $\geq$  5G, IP 67  
Direct Replacement of OEM Rearview Mirror  
Dimensions: 33 (H) • 60 (W) • 31 (D) mm

## AWTSL330C



Hole Size: 24.5mm

### Bullet Mount Camera

Image Type: 1/3 Color Camera, Lens: 120°  
Resolution: NTSC 510 (H) • 492 (V)  
Shock Resistance:  $\geq$  5G, IP68  
Flush Mount Bullet Camera - Hole Saw Included  
Dimensions: 28 (Diameter) • 39 (D) mm

# COMPLETE CAMERA & RADAR KITS (Recommended)

## Utility

\*Call for multiple camera applications  
\*Radar also available as separate kit



## Emergency

\*Call for multiple camera applications  
\*Radar also available as separate kit



## Ford Transit

\*Call for multiple camera applications  
\*Radar also available as separate kit



## Delivery

\*Call for multiple camera applications  
\*Radar also available as separate kit



## OTR

\*Call for multiple camera applications  
\*Radar also available as separate kit



\*Required for Tractor/Trailer Applications



## Universal Van

\*Call for multiple camera applications  
\*Radar also available as separate kit



\* All Cameras, Monitors and Radars are Interchangeable. Please Call for Specialty Applications.

# COMPLETE CAMERA & RADAR KITS (Recommended)

## Refuse



\*Call for multiple camera applications  
\*Radar also available as separate kit



## Construction



\*Call for multiple camera applications  
\*Radar also available as separate kit



## Mining



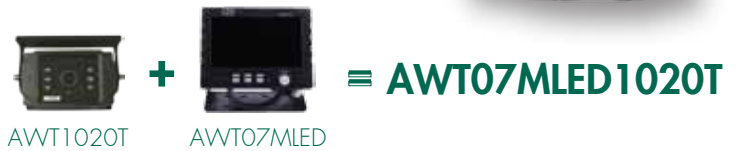
\*Call for multiple camera applications  
\*Radar also available as separate kit



## Armored Transport



\*Call for multiple camera applications  
\*Radar also available as separate kit



## Concrete / Aggregate



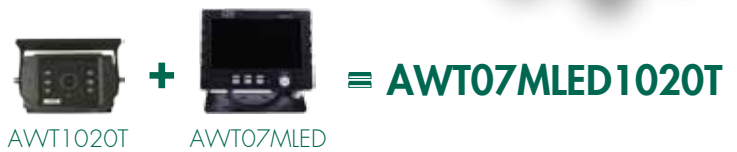
\*Call for multiple camera applications  
\*Radar also available as separate kit



## Military



\*Call for multiple camera applications  
\*Radar also available as separate kit



\* All Cameras, Monitors and Radars are Interchangeable. Please Call for Specialty Applications.

# ADAPTER PROGRAM AND ACCESSORIES

"Plug 'N Play" has never been easier. Our custom built adapters fit all major competitor brands allowing you to effortlessly upgrade your current system to the industry leading 3rd Eye MobileVision™ brand.

\*Please specify which camera system you are currently using when ordering



**AWTCAGE**  
Heavy Duty  
Camera Cage



**AWTMIRRMNT**  
Camera Mount  
for Side Mirrors



**AWT-CabMnt**  
Camera Mount  
for Side of Cab  
(Must Specify Side)



**AWT-AllyCamMnt**  
Camera Mount for  
the Tailgate of the Truck  
(Must Specify Side)



**AWTSVLHD**  
Heavy Duty  
Swivel Mount



**Standard Cable**  
AWT065T - 65 ft.  
AWT042T - 42 ft.  
AWT025T - 25 ft.  
AWT010T - 10 ft.



**Extension Cable**  
AWT065TT - 65 ft.  
AWT042TT - 42 ft.  
AWT025TT - 25 ft.  
AWT010TT - 10 ft.



**AWT-WinMnt**  
Glass Mount for  
Slim Line Monitors  
(Removable)

## BODY BUILDER CABLE

### WHAT IS THE BODY BUILDER CABLE?

**Body Builder Cable: The most advanced wiring and connector standard**

At the request of several national refuse fleets, 3rd Eye MobileVision™ developed a "Pass-Thru" cable to act as the single "Communication Backbone" between the truck chassis and body for advanced video safety systems.

### PURPOSE AND SCOPE

A single "Pass-Thru" cable terminated with heavy duty connectors would be the single "communications backbone" between the truck chassis and body.

The cable would support multiple electrical signals including analog video, audio and digital data. The cable is to be installed by the truck chassis OEM when an appropriate cable path is clearly visible.

The cab pre-wire cable is routed with the wiring loom of the truck cab when the truck chassis is manufactured.

The custom multi-conductor cable has 21 circuits that provide multiple functions including: DC low voltage power, ground video, audio, both analog and digital.

Non-proprietary connectors provide easy access and economical connectivity for advanced video, radar sensors and digital information technologies.



**CAB ADAPTER # 29086**



**EXT CABLE #29073**



**SENSORS INTERFACE**

**3RD EYE #AWT030TT CABLE**



**BB CAB PRE-WIRE CABLE**



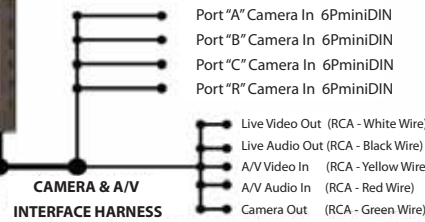
**BB EXTENSION CABLE #29089**



**TAILGATE ADAPTER #29059**



**6 PIN Power Plug**



**POWER & CONTROL  
CABLE HARNESS**



The Preferred mounting location for the AWTI/3rd Eye monitor is overhead. Dual Steer trucks require the use of a swivel base. Camera and monitor controls are to be located for easy access within reasonable reach in all driving positions. If the truck cab has been pre-wired with the AWTI Body-Builder Cable kit please contact AWTI for in-depth documentation that will assist you.



# OBJECT DETECTION - INTEGRATED RADAR SYSTEMS

## AWT3000RS



### Grommet Mounted Radar

Voltage: 10-28 VDC, Power: 0.6mA (12v)  
 Operating Temperature: -40°C to 85°C  
 Audible: 95db @ 3m, Range: Variable up to 30'  
 4" Grommet Mount for OEM Fit  
 All Weather Operation, 5 Year Warranty

## AWT2000RS



### Surface Mounted Radar

Voltage: 10-28 VDC, Power: 0.6mA (12v)  
 Operating Temperature: -40°C to 85°C  
 Audible: 95db @ 3m, Range: Variable up to 30'  
 Ruggedized Surface Mount Housing  
 All Weather Operation, 5 Year Warranty

## AWT1000RS



### Licence Plate Mounted

Voltage: 10-28 VDC, Power: 0.6mA (12v)  
 Operating Temperature: -40°C to 85°C  
 Audible: 95db @ 3m, Range: Variable up to 12'  
 Easy Mount for OEM Fit  
 All Weather Operation, 5 Year Warranty

## Reduce Backing Accidents

The 3rd Eye MobileVision family of "Integrated Radar Systems" offer cutting edge solutions to protect both the public and your drivers. This system will continue to drive up profitability by helping reduce costly blind spot accidents while increasing peace of mind and productivity within the organization!

This ruggedized radar system utilizes your existing 3rd Eye MobileVision Camera cables for easy installation. With our integrated Doppler Microwave Technology, you will benefit from the advantage of object detection/collision avoidance even under the most extreme applications.

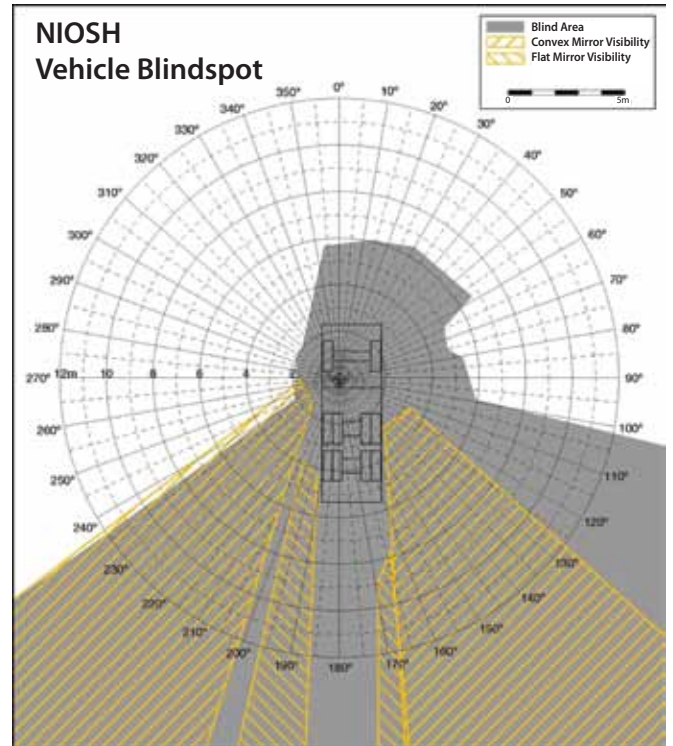
### SYSTEM BENEFITS:

- Single Sensor Operation\*
- Intelligent Technology
- Retrofit & OEM Solutions
- Integrates to Existing AWTI Camera Cable/Body Builder
- All Weather Operation
- 5 YEAR WARRANTY
- In-Cab Display w/Audible and Visual Warning
- Automatic Braking (Optional)

**\*MULTIPLE SENSOR SYSTEMS AVAILABLE FOR SPECIALITY APPLICATIONS**



- ✓ SAVE LIVES
- ✓ PROTECT ASSETS
- ✓ LOWER INSURANCE
- ✓ REDUCE ACCIDENTS
- ✓ INCREASE PRODUCTIVITY
- ✓ INCREASE DRIVER RETENTION



[www.awti.net](http://www.awti.net)  
**Toll Free: (866) 804-2984**

9940 W. Sam Houston Pkwy. Building 3 | Suite 330 | Houston TX



YOUR PARTNER IN SAFETY

# TIRE PRESSURE MONITORING

**HOW IT WORKS:** PressurePro's Original Tire Pressure Monitoring Systems continuously monitor tire pressures and temperatures using wireless RF technology to transmit data from stem mounted Sensors, to an in-cab display Monitor. Sensors have unique serial codes eliminating cross-talk and allowing custom baseline pressures from 8 to 300 psi.



## SYSTEM FEATURES

- Real time pressure readings
- Two low pressure alert levels
- Variable high pressure alert
- High temperature alert at 194°F
- Pressures reports in psi, KPa, BAR
- Built in RS232 capabilities
- Complete data logging ability
- American Made product
- In-cab or remote monitoring

## ALERT & REPORT DETAILS

- 1st level low pressure alerts at 12.5% drop
- 2nd level low pressure alerts at 25% drop
- Variable high pressure alert, 10-45% increase
- High temperature alert at 194°F
- Data logging, storage of up to 90 days
- Remote monitoring options

*Reliable. Durable. Tough.*

## SYSTEM SPECS

- Pressure Range = 10 to 300 PSI
- Operating Frequency = 433.92
- Temperature Range = -40° to 285°F
- Sensor Dimensions = 1.01" x 1.11"
- Sensor Weight = 17 grams
- Thread Size = Large & Standard Bore
- Power Requirements = 12 VDC
- Operating Draw = <77mA
- Monitoring Positions = 1 to 66

**Market's quickest installation and simplest programming:** With an average installation of only 30 minutes, PressurePro units can be easily installed during regularly scheduled maintenance. Powered by a 12V source, Monitors provide quick installation of Sensors requiring only a few touches of a button.

**Sensor Information:** Developed alongside GE Sensing and utilizing state of the art design and plastics, PressurePro Sensors are packed with over 22 years of top-of-the-line development and engineering. Utilizing specially designed lithium-ion batteries, PressurePro Sensors tout the market's longest Sensor life while superior component useage ensures the market's most durable product.



## BENEFITS

**Decrease Downtime & Maintenance:** Real time tire information helps you identify and resolve tire issues before they become detrimental, helping keep your vehicles running & operational.



**Extend Tire Life:** Under inflated tires are the #1 cause of tire failure and contribute to tire disintegration, heat buildup, ply separation and sidewall/casing breakdowns.

**Add Safety:** Faulty tires aren't just costly, they are dangerous for your vehicle operators and maintenance crew. Real time monitoring and alerts add safety for your vehicles & workers.



# The Best Choice for DVR



- H.264**
- Triple Stream**
- 
- 
- 
- 
- 

- Triple stream - individual network video / 3G / record streaming
- GPS Timing function
- Ignition-off record (30sec~60min)
- 8 Alarm-Input
- Trays for easy HDD swap and support anti-shock up to 2G
- 3G phone remote view (iPhone / iPad / Window Mobile / Android)

## Applications

Suitable for any way of transportation:  
Transport Vehicle, School Bus, Taxi, Garbage Truck, Ship, etc.



## 3 Models Available



3G/ WIFI / IO / GPS

IO / GPS

GPS Only

## GPS Information Record

GPS DVR supports latitude/longitude coordinates and driving speed along with additional information, tracks playback in Google Map.



## G-Sensor & Events Status Record

Built-in G-Sensor can record X/Y/Z axis changes, supports ignition recording function.



## Daylight Saving Time

Supports international daylight saving time, time set aside one hour automatically, eliminating the trouble of manually adjusting the time.



## CMS Mobile Surveillance Management Platform Software

Includes CMS software that can view real-time video and manages fleet while enhancing the overall scope of a simple GPS tracker.





# www.AWTI.net



Toll Free: (866) 804-2984  
Office: (713) 690-4100

Fax: (713) 690-5800  
info@awti.net

9940 W. Sam Houston Pkwy.  
Suite 330 | Houston, TX 77099

